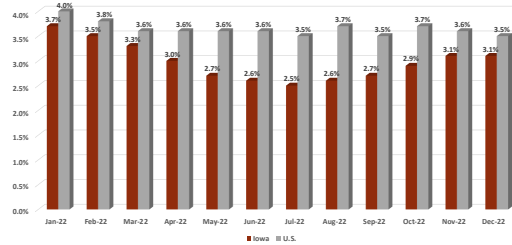


Status of the Iowa Workforce and Economy

Upcoming 2022 News Release Schedule

Reference Month	Statewide News Release	Local Area News Release
Jan	Mar 14	Mar 14
Feb	Mar 25	Mar 25
Mar	Apr 15	Apr 15
Apr	May 20	May 24
May	Jun 16	Jun 21
Jun	Jul 21	Jul 26
Jul	Aug 18	Aug 23
Aug	Sep 15	Sep 20
Sep	Oct 20	Oct 25
Oct	Nov 17	Nov 22
Nov	Dec 15	Dec 20
Dec	Jan 20	Jan 24

Iowa and U.S. Unemployment Rates –2022



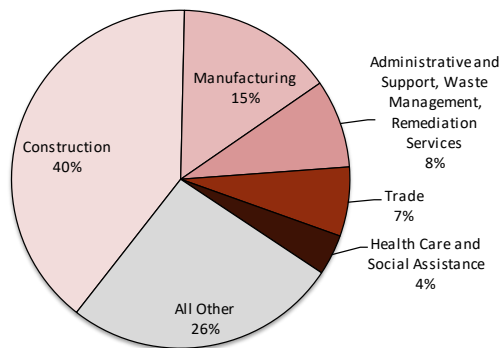
- Iowa's unemployment rate remained at 3.1 percent in December. The state's jobless rate was 3.9 percent one year ago.
- The state's total employment level decreased to 1,656,400 in December from 1,659,000 in November.
- The U.S. unemployment rate dropped to 3.5 percent in December.

- Total Nonfarm employment in Iowa ended the year with 2,400 jobs added in December. This gain follows a November revision which saw 500 jobs shed.
- Health care and social assistance gained 1,500 jobs in December. These increases were spread throughout all segments of this industry.
- Professional and business services added 1,100 jobs. Most of these jobs gained were in professional, scientific, and technical services.
- Retail trade added 900 jobs as firms prepared for increased holiday shopping. This sector has shown increased willingness to hire to end the year following layoffs in the spring.
- Construction shed the most jobs in December (-700). This industry has shown little trend through 2022 and ends the year matching last year's level.
- Compared to last year, Iowa firms have added 34,200 jobs. The largest gains have been in leisure and hospitality (+13,000) and manufacturing (+7,600).
- Nationally, total nonfarm employment added 223,000 jobs in December. The largest increases were in leisure and hospitality and health care.

Iowa Nonfarm Employment Seasonally Adjusted

Year	Month	Iowa Statewide Employment	Leisure & Hospitality Employment
2022	May	1,567,700	140,100
	June	1,571,400	141,400
	July	1,574,400	141,500
	Aug	1,579,800	142,800
	Sep	1,580,100	144,900
	Oct	1,585,600	147,500
	Nov	1,585,100	148,400
	Dec	1,587,500	148,000

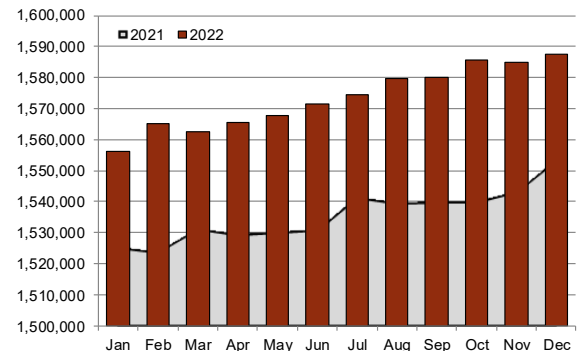
Iowa Unemployment Insurance (UI) Benefits by Industry January 2022 through December 2022



Source: Iowa Workforce Development

- The employment situation has improved in 2022. This caused cyclical layoffs to decline. Therefore, a larger percentage of unemployment insurance benefits were the result of seasonal layoffs. The construction industry accounts for the majority of the seasonal layoffs in Iowa.

Total Nonfarm Employment January 2021 to December 2022



Iowa Workforce Development

Information Prepared by the Labor Market Information Division

1000 East Grand Avenue
Des Moines, Iowa 50319-0209

Phone: 515-242-5862
Fax: 515-281-8203

Donna Burkett, Bureau Chief
Iowa Workforce Development